



Cleanroom Management International  
Groupe Trescal



**PELI**  
**BIOTHERMAL™**

# NanoCool™ COOLING SYSTEMS



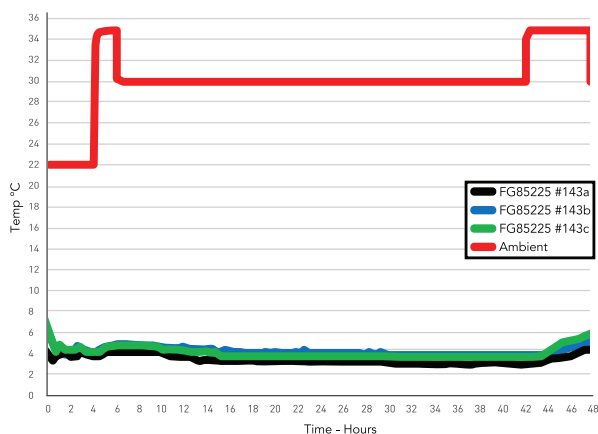
## 2°C TO 8°C CONTROL WITHOUT PRECONDITIONING

Cooling Systems are the original temperature-controlled refrigerated shipping systems introduced for 2-8°C product transport. These systems rely on evaporative cooling technology for thermal protection. Our evaporative cooling is seven times more powerful than gel packs or ice. It works by transferring internal heat to the outside through evaporation of a small amount of water stored at low pressure inside the package. Evaporation takes place at low temperatures and creates a powerful cooling effect. The active cooling process adjusts to variations in ambient temperature in a way that conventional cooling systems cannot.

## WHY CHOOSE COOLING SYSTEMS

- Reduced freight expenses
- Lower inventory costs
- Less warehouse space
- No need for freezers or refrigeration

Cooling System 48-Hour Qualification Graph



## COOLING SYSTEMS

### DURATION

48 hours  
72 hours  
87 hours  
92 hours

### TEMPERATURE

2°C to 8°C

# COOLING SYSTEMS

## ACTIVATING IS AS EASY AS 1-2-3

Easily portable, Cooling Systems arrive ready to activate and ship. There's no need to freeze and condition coolants or worry whether they have been conditioned correctly.



1. Open box, remove cooling engine and place silver foil side down on a flat surface. Push straight down on the activation button.
2. Notice the NanoCool logo turning blue between 30 seconds and 3 minutes indicating cooling has begun. Confirm by touching the surface of the cooling engine near the activation button.
3. Load product into the payload compartment, replace the cooling engine, close the box and tape shut prior to shipping.

## COOLING SYSTEMS PRODUCT SPECIFICATION

	Product	Temperature (Celsius)	Duration (Hours)	Outer dimensions (millimeters)	Usable space (millimeters)	Weight (kilograms)	DIM weight (pounds)
2°C - 8°C	2-85225	2-8°C	48	307 x 201 x 129	216 x 119 x 41	1.7	4
	2-85228	2-8°C	72	307 x 201 x 129	216 x 119 x 41	1.9	4
	2-85401	2-8°C	48	307 x 201 x 189	216 x 119 x 102	2.3	5
	2-85408	2-8°C	92	307 x 201 x 189	216 x 119 x 102	2.5	5
	2-98601	2-8°C	48	352 x 305 x 262	241 x 221 x 155	4.3	13
	2-98608	2-8°C	87	352 x 305 x 262	241 x 221 x 155	4.9	13
2°C-10°C	2-98801	2-10°C	48	360 x 305 x 305	241 x 221 x 196	4.7	15

ISO17025, ISO9001-2008 Accredited

Golden Hour™, TIC™, Credo™, Credo Cube™, Credo ProEnvision™, Credo Xtreme™, Credo Duracube™, Credo ProMed™, Sherpa Systems™, CoolGuard™ and CoolPall™ are registered trademarks of Pelican Products Inc., its subsidiaries and/or affiliates.



**PELI**  
**BIO THERMAL™**

©2021 Peli BioThermal Ltd all rights reserved

### CMI BELGIUM

Avenue de Ramelot 3  
B - 1480 Saintes (Sint Renelde)  
Tel : +32 (0)2 531 11 21  
info@cmitest.com

### CMI THE NETHERLANDS

Luchthavenweg 81  
NL – 5657 EA Eindhoven  
Tel : +31 (0)402 88 87 57  
info@cmitest.com

### CMI FRANCE

Ecoparc d'Affaires  
F- 41210 Neung-sur-Beuvron  
Tel : +33 (0)2 54 95 70 95  
info@cmitest.com

Agence Rhône Alpes :  
F- 26160 La Bégude-de-Mazenc  
Tel : +33 (0)4 75 54 57 26



[www.cmitest.com](http://www.cmitest.com)