



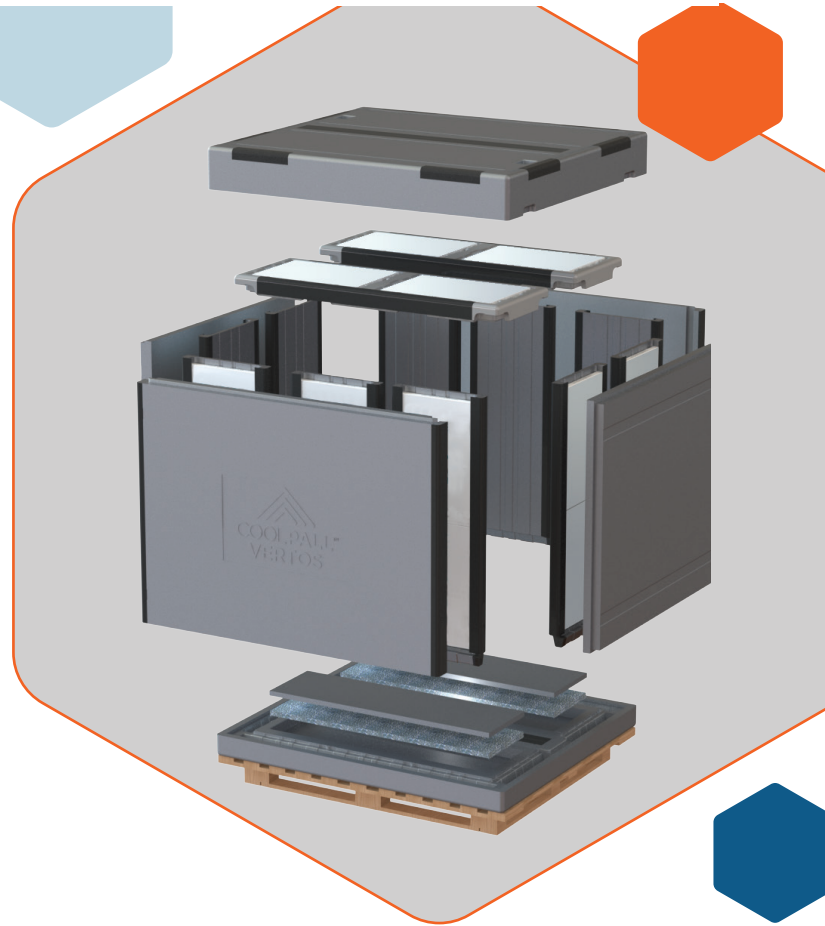
Cleanroom Management International  
Groupe Trescal



**PELI**  
**BIO THERMAL™**



# COOLPALL™ VERTOS ADVANCE



## OUR NEW BULK SHIPPING SYSTEM FEATURING PCM COOLANTS

CoolPall™ Vertos Advance is the NEW high performance bulk shipping system from Peli BioThermal™. This bulk shipper features PCM coolants and has been designed to be flat packed, modular, and easily assembled. The CoolPall™ Vertos Advance maintains 2°C to 8°C for 120 hours of temperature controlled performance.

## WHY CHOOSE COOLPALL™ VERTOS ADVANCE?

### Ease & Speed of Use

- Superior performance foam and PCM technology reduces excursions and allows for hibernation to be achieved during transit, which pauses phase change within the shipper and can yield longer temperature compliant shipments
- Ergonomic design utilises innovative interlocking components to ensure quick and easy assembly
- Modular components reduces inventory and allows for simple ordering of spare parts
- Reduced flat-packed height minimises in-bound distribution costs and frees up valuable warehouse storage space
- Accepts full pallets of product for operational speed and simplicity

### Robust performance

- Provides strict temperature control of product within the demanding environment of global distribution
- Utilises high density molded materials for thermal and mechanical robustness while remaining lightweight
- Best in class payload to external volume ratio, lowering transport costs



**DURATION**  
120+ Hours



**TEMPERATURE**  
2°C to 8°C

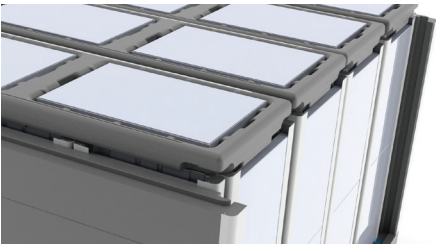
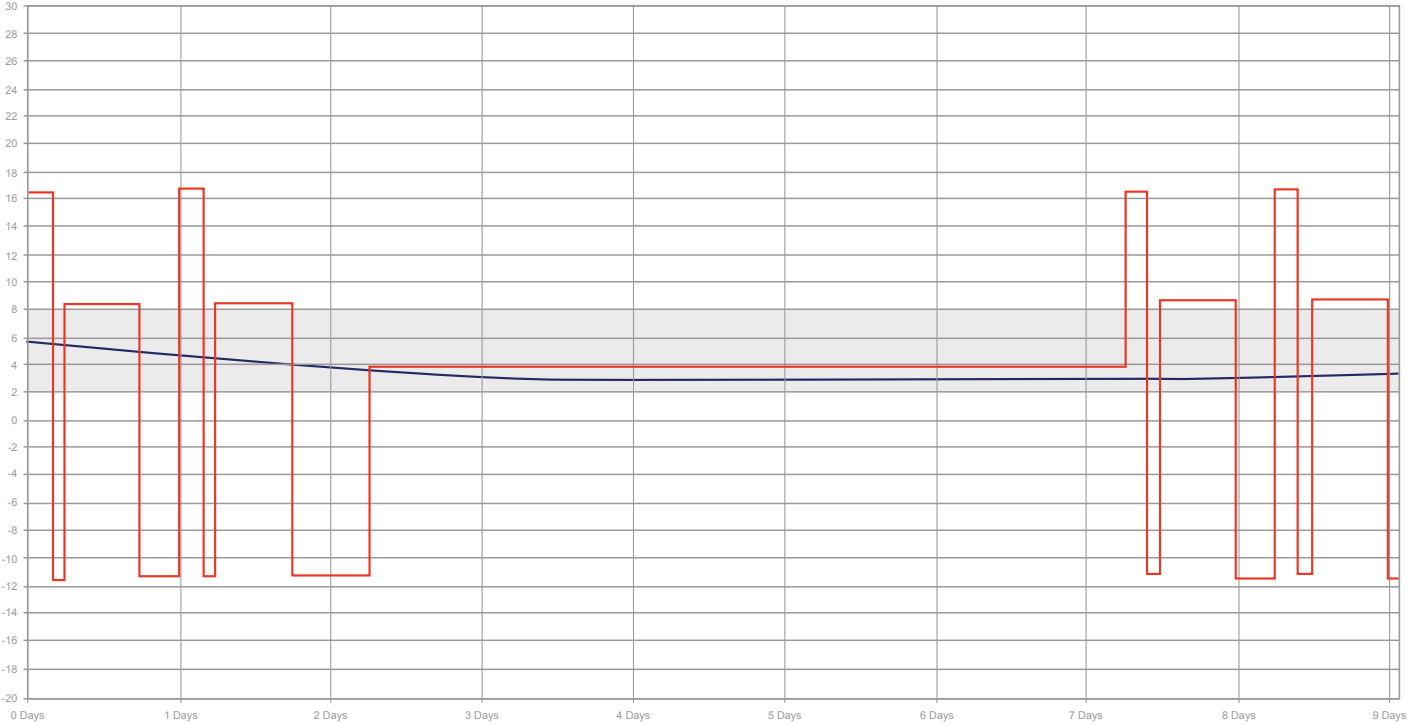


**VOLUME**  
ISO Pallet size,  
volume up to 1680L

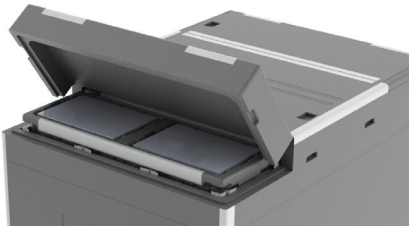
COOLPALL™ VERTOS ADVANCE PRODUCT SPECIFICATION

	Payload Size	Exterior Dimensions WxDxH		Interior Dimensions WxDxH		Tare Weight	
		mm	inches	mm	inches	kg	lbs
ISOPAD	1680L	1355 x 1565 x 1595	53 x 62 x 63	1127 x 1296 x 1150	44 x 51 x 45	235	518

Peli BioThermal Profile, CoolPall™ Vertos Advance +2°C to +8°C



Interlocking high density construction



Inspection hatch  
Minimising the potential for excursions during customs inspection



**CMI FRANCE**  
Ecoparc d’Affaires  
F- 41210 Neung-sur-Beuvron  
Tel : +33 (0)2 54 95 70 95

Agence Rhône Alpes :  
F- 26160 La Bégude de Mazenc  
Tel: +33 (0)4 75 54 57 26

[infofr@cmitest.com](mailto:infofr@cmitest.com)  
[www.cमितest.com](http://www.cमितest.com)



ISO17025, ISO9001-2008 Accredited



Golden Hour™, TIC™, Crêdo™, Crêdo Cube™, Crêdo ProEnvision™, Crêdo Xtreme™, Crêdo Duracube™, Crêdo ProMed™, Sherpa Systems™, CoolGuard™ and CoolPall™ are registered trademarks of Pelican Products Inc., its subsidiaries and / or affiliates

©2022 Peli BioThermal Ltd all rights reserved